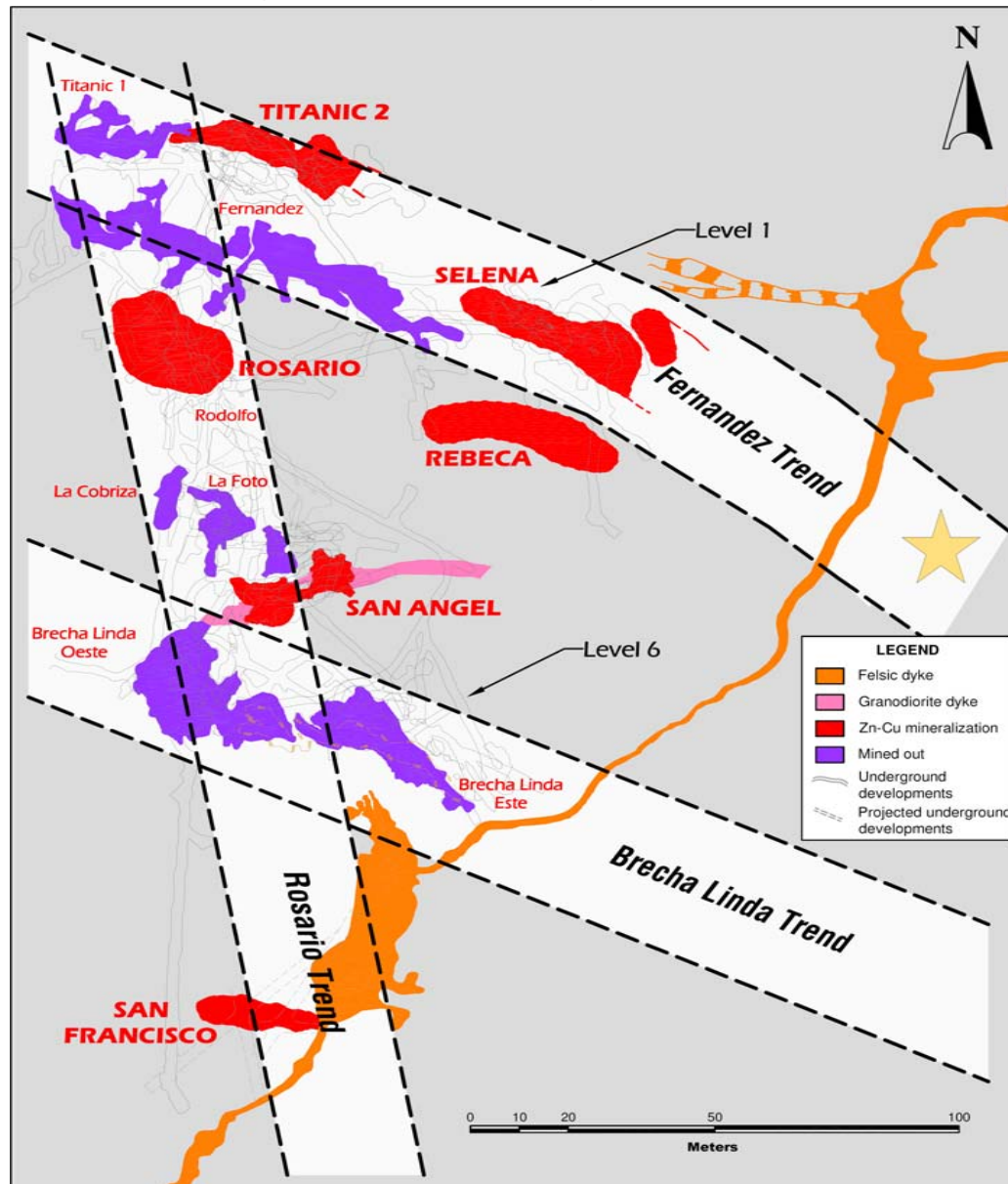


Bolivar (Alta Ley) Mine

Underground Workings and Mineralized Trends



- Selena lens appears to continue downdip and along strike.
- San Angel lens might continue downdip and across strike.



Location of the diamond drill holes 200 (3% Cu over 2.1m) and 213 (8.1% Cu & 14.4% Zn over 2.2m) that intersected Cu-Zn mineralisation 150 m ESE and 100 m deeper than the actual workings.